



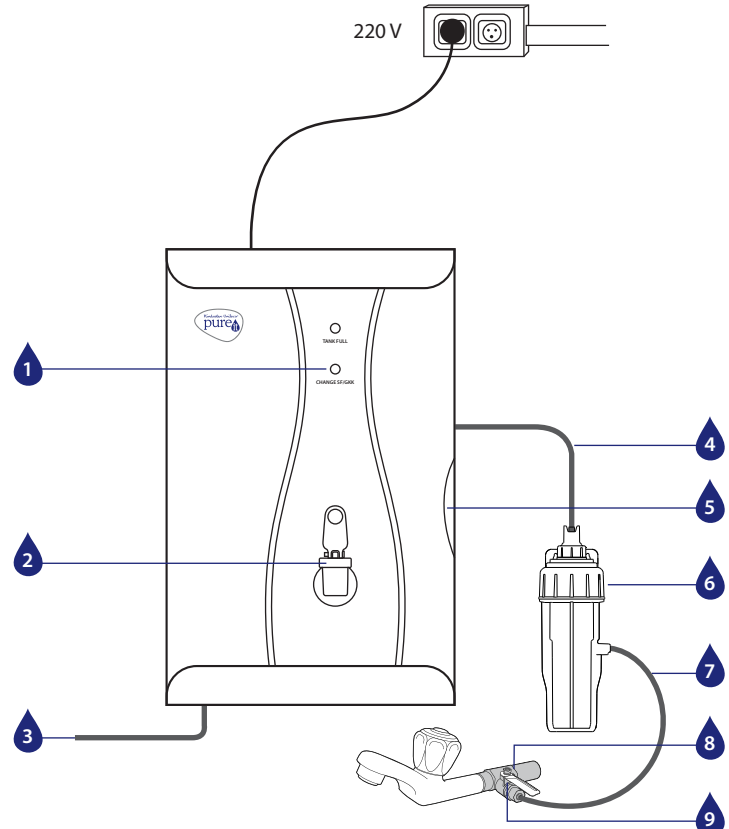
Welcome to the Pureit family
World's largest selling purifier[®]

INSTRUCTION MANUAL

Classic - S X B 6 1
Classic - S Y B 6 1



KNOW YOUR PUREIT MINERAL RO+MF / RO+UV*



- | | |
|------------------------------|--------------------|
| 01. LED Indicator | 06. Compound ESF |
| 02. Tap | 07. ESF Inlet Tube |
| 03. Waste Water Tube | 08. Diverter |
| 04. Compound ESF Outlet Tube | 09. Ball Valve |
| 05. Water Level Indicator | |

UNIQUE FEATURES OF PUREIT MINERAL RO+MF / RO+UV*



Advance Alert System alerts you ~15 days before life of the Germkill Kit gets over



Advanced 6 stage purification through RO+MF / RO+UV* technology



Adds minerals post purification to enhance the taste of water



6 Litre Storage** with Water-Level Indicator for the bottom 3 litres



Protects your purifier from sudden voltage fluctuation as high as 280 volts and also works in as low as 100 VAC



100% water passes through RO and UV/MF* to give completely safe water always



Removes 1 crore virus in 1 litre of water ^

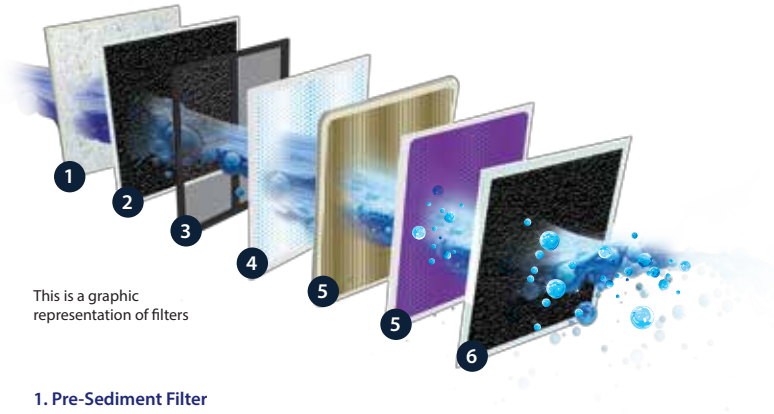
*Representation of the US EPA torture test of 4 log virus removed from 1 ml of contaminated water.

~Advance Alert System for SF change will alert you 15 days before end of every 180 days (approx) or 15 hours before completion of every 150 hours of pump running time, whichever is earlier. AAS for GKK will alert you 15 days before the end of every 360 days (approx) or 15 hours before completion of every 300 hours (approx) of pump running time, whichever is earlier. The purifier will communicate the alert only if the purifier is in a switched on condition during the scheduled alert time. Post the completion of the scheduled alert time, Auto Shut Off™ of water will be activated automatically, even if the purifier is in a switched off condition.

**Dispensed volume under running water conditions up to 5.8 - 6.1L.

*Will vary basis the model; Pureit RO + MF has MF membrane, RO + UV has UV chamber.





This is a graphic representation of filters

1. Pre-Sediment Filter

Removes fine and coarse particulate impurities/dirt and improves the life of the Carbon Filter.

2. Pre-RO Carbon Filter

Removes chlorine and organic impurities like harmful pesticides. It also absorbs bad taste and odour causing organic compounds from water.

3. Mini Filter

Filters water further to ensure removal of finer particulate impurities.

4. RO Membrane

Removes dissolved salts, hardness, pesticides and heavy metals like arsenic, lead and mercury. It also removes microbial contaminants like bacteria, virus, protozoa and cysts.

5. Micro Filtration Filter / UV Chamber

Micro Filtration Filter / UV Chamber is added Post-RO, which ensures that the water is purified not once but twice.

6. Post-RO Carbon Filter

Last level of purification acts as a polisher and enhances the taste of the purified water.

1. The purifier should be installed by a trained Pureit technician.
2. It can be wall-mounted or used as a table top purifier.
3. The purifier should be placed in area which is free of ants/insects/other pests.
4. The purifier should be placed close to the plumbed inlet connection (not more than 2 metres).
5. Do not install the purifier above any electric socket.
6. Avoid sharp bends to the pipes of the product.
7. Do not use an extension cord.
8. Before installing the purifier please check the inlet pressure.
9. Make sure you test the input water TDS (Total dissolved salts) before installing the purifier. The maximum input TDS should not exceed 1800 PPM.
10. Do not connect the purifier to any hot water tap.
11. Please do not terminate the reject line tubing directly into the drainage (keep it hanging over the drainage).
12. Do not place the unit where it will be exposed to freezing and/or direct sunlight and ensure there is enough ventilation.

Cleaning

1. Clean the tap nozzle using disinfectants like bleach/hypochlorite (50 PPM available chlorine). Discard 2 litres of water after cleaning the dispenser.
2. Clean the external portion of the purifier using a dry cloth only. Do not use any detergent or soap.
3. Do not clean aggressively or rub the surface and the LED display panel as this might lead to scratches on the parts.
4. Never splash water on the purifier while cleaning.
5. Do not try to open the purifier for cleaning or for any replacements. This can be done only by a qualified company personnel or an authorised agent.
6. You should maintain good hygiene in the area around your water purifier. Ensure that this area is free of ants/insects/other pests.
7. Do take care of the reject line and other tubes while cleaning the purifier else water can flow into the kitchen.

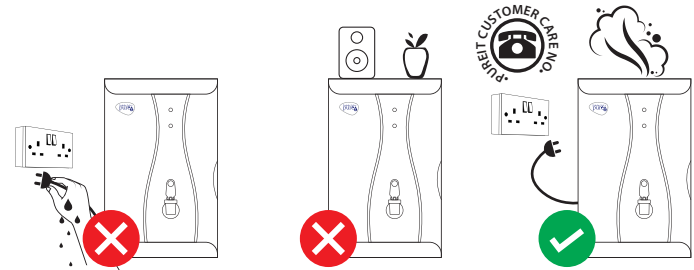
Storage Tank

1. Discard the water in the Storage Tank once in 15 days through the tap.
2. Always drain the water in the Storage Tank if you have not used the purifier more than 2 days.

Other Important Instructions

1. When you are away / during over head tank cleaning always ensure to switch off the electrical power and the ball valve.
2. Do not put any heavy or sharp objects on the purifier.
3. Please dispose the used consumables like Sediment Filters, Carbon Filters and Membranes along with the other household waste through the municipal disposal system.

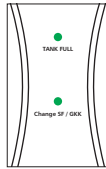
Disposal Guidelines (Electrical): To prevent possible harm to the environment or human health from uncontrolled waste disposal, please separate electrical items in this product such as power supply adaptor, control circuits, LED panel and wiring from other types of waste and recycle them responsibly to promote sustainable use of material resources. Contact either the retailer where you purchased this product or local government office for details of where and how these items can be taken for environmentally safe recycling.



1. Do not consume the water from the waste water tube for drinking purpose. However, you can use that water for gardening or cleaning the floors.
2. Do not plug or unplug the power cord with wet hands. Ensure that the plug isn't wet while plugging in, or plugging out to avoid risks such as electrical shock or fire.
3. Keep the cord away from wiring conjunctions to avoid hazard. Never put the cord under rugs, near heat resistors, radiators, stoves or heaters.
4. If the power cord is damaged, the power cord must be replaced and not used.
5. In case of any smoke or burning smell, remove the plug immediately and call the Pureit Helpline.
6. When shifting your house, get the purifier duly inspected and packed by the Pureit service technician. Remove water from the Storage Tank and pack the purifier properly in case of shifting.
7. Please ensure to switch off the power whenever you turn off the Ball Valve.
8. The point-of-use reverse osmosis drinking water treatment systems addressed by NSF-58 standard are designed to be used for reduction of specific substances that may be present in drinking water supplies (public or private) which are considered to be microbiologically safe and are of known quality.
9. The output water may continue to have flora which are harmless and pose no health hazard to normal healthy adults and children.

PUREIT MINERAL RO+MF / RO+UV* UNIQUE ADVANCE ALERT SYSTEM

Indicator	Indicator Status	Frequency of indication	Indication
Tank Full	○ No Light	N/A	Tank is not full
	● Green	N/A	Tank is full
SF Change	● Green	N/A	Pre-Sediment Filter is safe to use
	● Blinking Blue	165 days of clock time or 135 hours of pump running time, whichever is earlier, after device installation or GKK replacement	Life of the Pre-Sediment Filter will end soon. Please contact the Pureit Helpline and get your Pre-Sediment Filter replaced ^②
	● Solid Blue	180 days of clock time or 150 hours of pump running time, whichever is earlier, after device installation or GKK replacement	This indicates the life of the Pre-Sediment Filter is completed and must be replaced. At this point, Auto Shut Off™ shuts the water flow ensuring you don't drink unsafe water even by accident
GKK Change	● Green	N/A	GKK is safe to use
	● Blinking Red	After every 345 days of clock time or 285 hours of pump running time, whichever is earlier, after device installation or GKK replacement	GKK life will end soon. Please contact the Pureit Helpline to replace your GKK.
	● Solid Red	After every 360 days of clock time or 300 ^③ hours of pump running time, whichever is earlier, after device installation or GKK replacement	GKK life is completed and must be replaced. At this point, Auto Shut Off™ shuts the water flow ensuring you don't drink unsafe water even by accident



During the initial start up, the tank full LED and GKK LED will be light up for 2 seconds. GKK LED will come on Red-Green-Blue sequence. The tank full LED will blink for max. 15 minutes and then restore to normal operation thereafter.

- ① In case of any key electrical faults (RO Pump, UV Fault) GKK LED will start blinking Red-Green-Blue in sequence.
- ② There is a free Sediment Filter in your device which needs to be preserved to facilitate the above change. In case you misplace the free SF, then at the time of Sediment Filter change you will have to buy the same at extra cost.
- ③ After every 300 hours of pump running time or 360 days of clock time, whichever is earlier the respective Germkill Kit needs to be changed. Every 300 hours of pump running time typically gives 3000 litres of purified water under test conditions of 18 PSI input pressure, 450-500 ppm TDS and 25°C temperature. Variations from the test conditions could lead to variation in filtered water volume.

While the Germkill Kits and the Sediment Filter have a fixed replacement schedule, you might be required to change the SF in the interim depending on the quality of your input water.

TECHNICAL SPECIFICATIONS

Pureit Mineral RO+MF / RO+UV*	
Model	Pureit Mineral RO+MF / RO+UV*
Dimensions (Height X Width X Depth)	297 mm X 199 mm X 435 mm
Weight (Complete Unit)	7.3 Kg
Flow Rate	Upto 10-12 LPH
Storage Tank Capacity	6 Litres ^④
6 Stage Purifying Technology	Pre-Sediment Filter, Pre-RO Carbon Filter, Mini Filter, Reverse Osmosis Membrane, Micro Filtration Membrane/UV and Post-RO Carbon Filter
Membrane Type	Thin film composite spiral wound
Pump Type	Diaphragm pump, 24V DC
% Recovery ^⑤	Typically 25%
TDS Reduction ^⑥	90% (min.)
Input Water	PH range 6.5-8.5, Temperature range 10°C- 40°C
Power Rating	55 Watts Maximum
Pressure Rating	10-30 PSI ^⑦
Input Voltage	165-240Vac, 50 Hz
Material of construction for plastic parts	Food safe, non-toxic, engineering grade plastics
Length of Power Cord	1.5 metres
Total Dissolved Solids in input water	Up to 1800 mg/lit ^⑧
Total Hardness	500 mg/lit (max.)
Iron in Input Water	0.3 mg/lit (max.)
Turbidity in Input Water	1 NTU (max.)
Germkill Kit™	
Material of Construction	Food safe, non-toxic, engineering grade plastics
GKK	Pre-Sediment Filter - 2 Nos. Pre-RO Carbon Filter - 1 No. Post-RO Carbon Filter - 1 No. Mini Filter - 1 No. RO Membrane - 1 No. Micro Filtration Membrane - 1 No. in case of RO+MF TDS Modulator - 1 No. RO Membrane - 1 No.
Germkill performance standard	Meets stringent international criteria for microbiologically safe drinking water - e.g. Environmental Protection Agency (EPA), USA

④ 5.8 to 6.1 under running water conditions

⑤ Permeate flow rate and recovery are based on standard test conditions and may vary depending on input water quality, TDS, pressure and life of Filter elements.

⑥ Input water quality and TDS content are important determinants of output water quality.

⑦ If input pressure exceeds 30 PSI, please install a company provided pressure reducing valve at an additional cost.

If the pressure is less than 10 PSI then you need to buy 'Pressure enhancing pump' at an additional cost.

⑧ Device should not be installed in a house where input pressure is greater than 60 PSI.

Post-RO Carbon Filter fitted in the device may need to be changed intermittently at extra cost in case you face smell issues.

Technical specifications are subject to change or improvement without prior notice.

⑨ In case the TDS is >1000 PPM, a company provided anti-scalant is recommended to be installed. This has to be purchased at extra cost.

How does Pureit Mineral RO+MF / RO+UV* purify water?

Pureit Mineral RO+MF / RO+UV* has a 6-stage purification process which ensures you to get water that is 'As Safe As Boiled Water' and also removes excess Total Dissolved Solids (TDS) to make your water tastier.

Stage 1st

Pre-Sediment Filter: Removes fine and coarse particulate impurities/dirt and improves the life of the Carbon Filter.

Stage 2nd:

Pre-RO Carbon Filter: Removes chlorine and organic impurities like harmful pesticides. It also absorbs bad taste odour causing organic compounds from water.

Stage 3rd:

Mini Filter: Filters water further to ensure removal of finer particulate impurities.

Stage 4th:

RO Membrane: Removes dissolved salts, hardness, pesticides, fluoride and heavy metals like arsenic, lead and mercury. It also removes microbial contaminants like bacteria, virus, protozoa and cysts.

Stage 5th:

Micro Filtration Membrane(MF)/UV: Micro Filtration Membrane (MF)/UV is added Post-RO, which ensures that the water is purified not once but twice.

Stage 6th:

Post-RO Carbon Filter: Last level of purification acts as a polisher and enhances the taste of purified water.

What is the storage capacity of Pureit Mineral RO+MF / RO+UV*?

Pureit has Storage Tank capacity of upto 6 litres. The storage tank is fully automatic and well shielded and as and when you take water out of the tank, the purification process starts automatically again and refills the Storage Tank.

How much time does it take to purify water in Pureit Mineral RO+MF / RO+UV*?

Pureit can purify water up to 10-12 litres per hour depending on the device you have purchased. However, the time taken to purify depends on the life of the filters, the input water pressure, TDS and other impurities present in the water.

Does Pureit Mineral RO+MF / RO+UV* remove arsenic, fluoride and nitrates?

Like other ions, the RO technology can also remove arsenic, fluoride and nitrates.

How will I get new consumables/Membranes replaced?

You need to call the Pureit Helpline and order the consumables. The customer care specialist will visit your place and replace the consumable/Germkill Kit at a nominal cost.

What should I do if the flow rate from tap is low?

Please check the LEDs and see whether SF or GKK needs to be replaced as per the instructions in 'Advance Alert System' section. If not then contact the Pureit Helpline for assistance.

What are all the consumables which are to be replaced?

You need to replace the Sediment Filter, Pre and Post RO Carbon Filters, RO Membranes, Micro Filtrations Membrane*, Mini Filter and TDS Modulator when the GKK starts blinking Red. These parts can be bought together by ordering GKK.

Can I drink the first purification cycle of water from the purifier?

No, recommendation is to throw the first cycle of water that is filled in the Storage Tank when the new Pureit purifier is installed and also whenever the Germkill Kit are replaced.

What should I do if there is no purified water in the Storage Tank?

In case there is no purified water in the Storage Tank then

you need to first check whether the LED display shows Red/Blue in GKK check availability of input water. If none of the above 2 cases are true, please call Pureit Helpline.

Can I open and service my purifier?

It is not recommended to open and service purifier by an individual. Call our Pureit Helpline if you face any issue which requires servicing and opening of the purifier.

Can I use reject water?

It is not recommended to use the reject water for any kind of human/pets consumption (drinking or cooking). It may be used for gardening or cleaning floors.

What should I do if any part of purifier is broken?

Please call the Pureit Helpline. Our technicians will visit your house and guide you on the repairs required. There will be a nominal visiting charge and you would need to buy the parts required.

What should I do if there is leakage from the purifier?

First switch off the Ball Valve if you find any leakage from the purifier and turn off the power switch. Check for any visual improper fitment and then call our Pureit Helpline number and register a service request.

How long the stored water in Pureit Mineral RO+MF / RO+UV* can be used for drinking?

You can use stored water for 2 days. If it is not used for more than 2 days we advise you to discard that water, refill and then consume.

Reach Pureit @
1860-210-1000
www.pureitwater.com



WORLD'S LARGEST SELLING PURIFIER^①



WIDE RANGE OF RO PURIFIERS FROM PUREIT



^①Based on Unit Shipment Sales for 2014 Point-of-use water treatment systems. Excludes pitchers and faucet mount system.

Disclaimer: All images used in this manual are illustrative and the actual product may differ.